

# hewn

CUSTOM HOME DESIGN

## BAURENHAUS EUROPEAN

4 Bedrooms/ 3 Full Baths/ 1 Half Bath  
4,446 SF



### Exclusively marketed by:

Willow Branch Properties

Brad Pennington

Office: (615) 878.5664

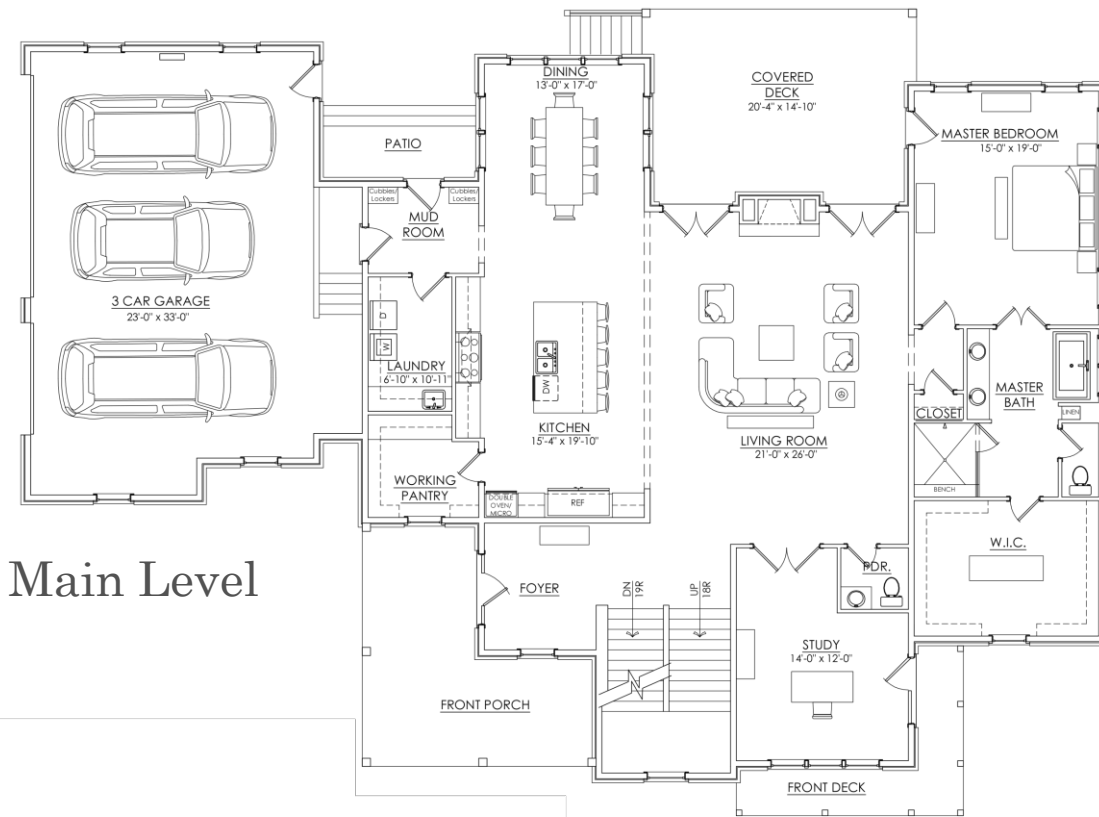
Cell: (615) 260.4131



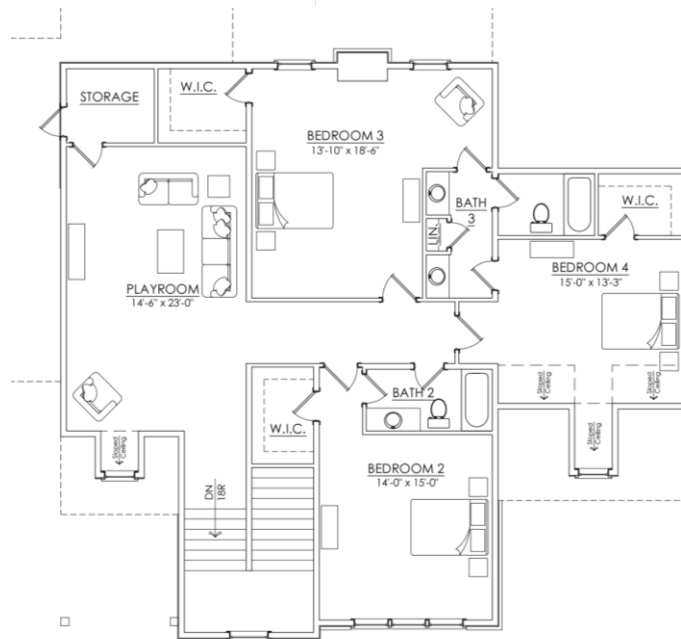
# BAURENHAUS EUROPEAN PLAN FEATURES:

- 3 Car Garage
- Walk-in Working Pantry
- Oversize Living Room
  - Study

- Large Covered Deck & Patio
  - Freestanding Tub
  - Spacious Playroom



Main Level



Upper Level

**SOME ARCHITECTURAL ELEVATIONS ARE PREMIUM, SEE SALES CONSULTANT FOR SPECIFIC PRICING, FOUNDATION STYLE & DRIVEWAY LOCATION ARE HOMESITE SPECIFIC.**

Prices are subject to change without prior notice. Homesite premiums and designer options/ upgrades are in addition to the base prices. Square Footage is approximate and may vary. Watercolor may depict upgrades (eg. Windows, Doors, Garages). See Agent for details. Steps to grade as necessary. Due to builder's continual effort to improve it's plans and designs, we reserve the right to change plans and specifications without notice. Individual homes may vary from the model or from each other. Elevations subject to change. Revised 11-17-2022.